

Tactical lineups: Full time

Matchday 2 - Wednesday 1 October 2014

Group D - Constant Vanden Stock Stadium - Brussels

RSC Anderlecht 0 - 3 Borussia Dortmund

73' (In) 18 Acheampong / (Out) 20 Conté
 82' (In) 42 Kabasele / (Out) 45 A. Mitrović
 82' (In) 15 Cyriac / (Out) 9 Suárez

65' (In) 20 Ramos / (Out) 19 Grosskreutz
 72' (In) 37 Durm / (Out) 9 Immobile
 82' (In) 15 Hummels / (Out) 6 Bender

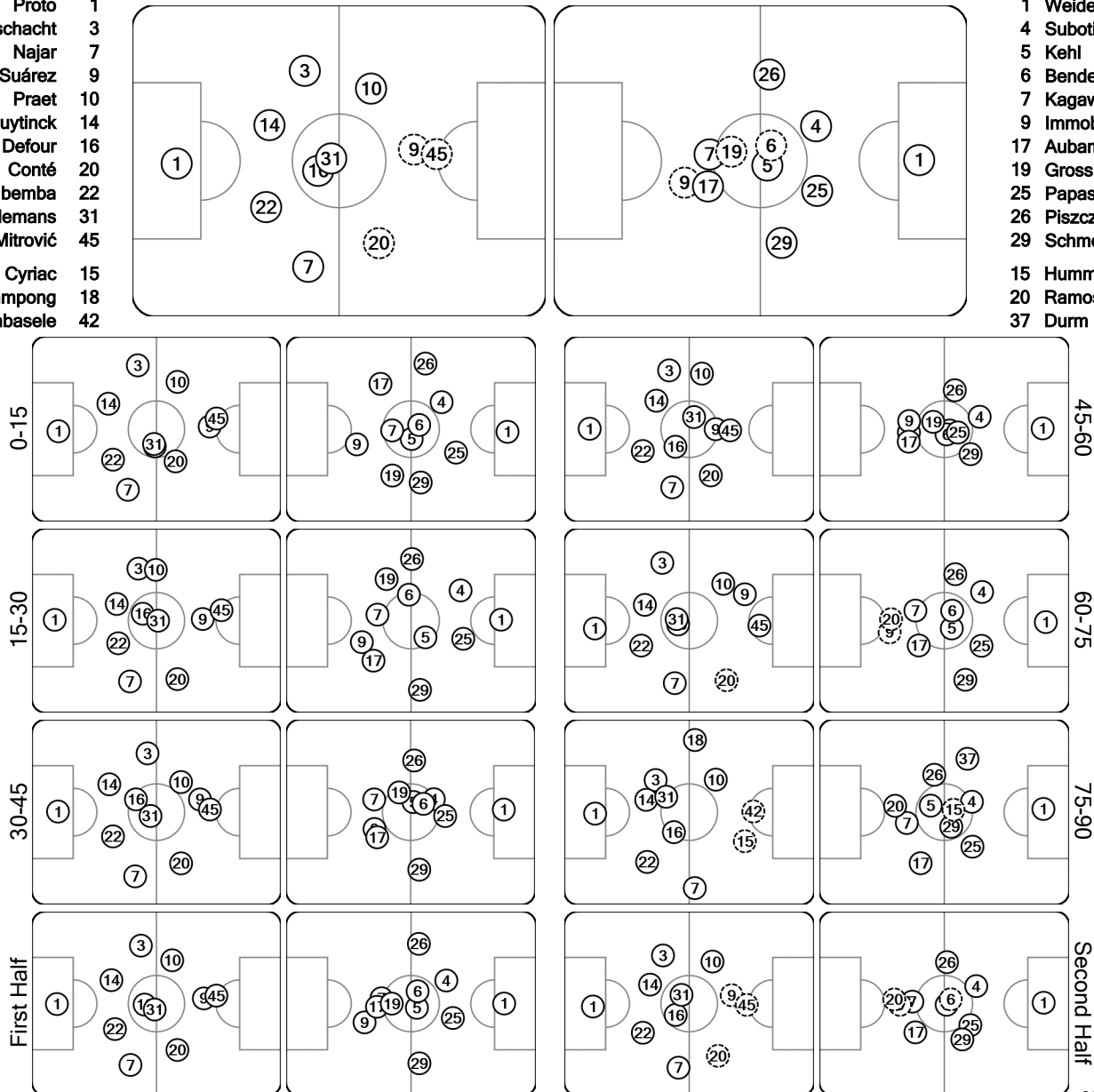
Total time played: 94'04"
 51% - 32'43" Ball possession 49% - 30'58"

Actual formation

Direction of play --> <-- Direction of play

- Proto 1
- Deschacht 3
- Najar 7
- Suárez 9
- Praet 10
- Nuytinck 14
- Defour 16
- Conté 20
- Mbemba 22
- Tielemans 31
- Mitrović 45
- Cyriac 15
- Acheampong 18
- Kabasele 42

- 1 Weidenfeller
- 4 Subotić
- 5 Kehl
- 6 Bender
- 7 Kagawa
- 9 Immobile
- 17 Aubameyang
- 19 Grosskreutz
- 25 Papastathopoulos
- 26 Piszczek
- 29 Schmelzer
- 15 Hummels
- 20 Ramos
- 37 Durm



○ did not play the entire match (S) substitution (R) sent off

02:20:31CET
02 Oct 2014